

Objednatel stavby:

**Město Benešov**

Masarykovo náměstí 100

256 01 Benešov

Česká republika

Zhotovitel:

**SATRA, spol. s r.o.**

Sokolská 32

120 00 Praha 2

Česká republika

Hlavní inženýr projektu: Ing. Martin Laloušek

Název stavby:

CYKLOSTEZKA BENEŠOV, ERBENOVA ULICE - POMNĚNICE, ETAPA I.

Zhotovitel:



Vypracoval

Ing. Martin Laloušek

Zodp. projektant

Ing. Martin Laloušek

Tech. kontrola

Ing. Martina Křečková

Název části:

STAVEBNÍ ČÁST
OBJEKTY KOMUNIKACÍ

Název přílohy:

PŘÍČNÉ ŘEZY

Zak. číslo

1275/16-400

Datum

09/2018

Stupeň

DSP

Počet formátů

18x A4

Měřítko

1:100

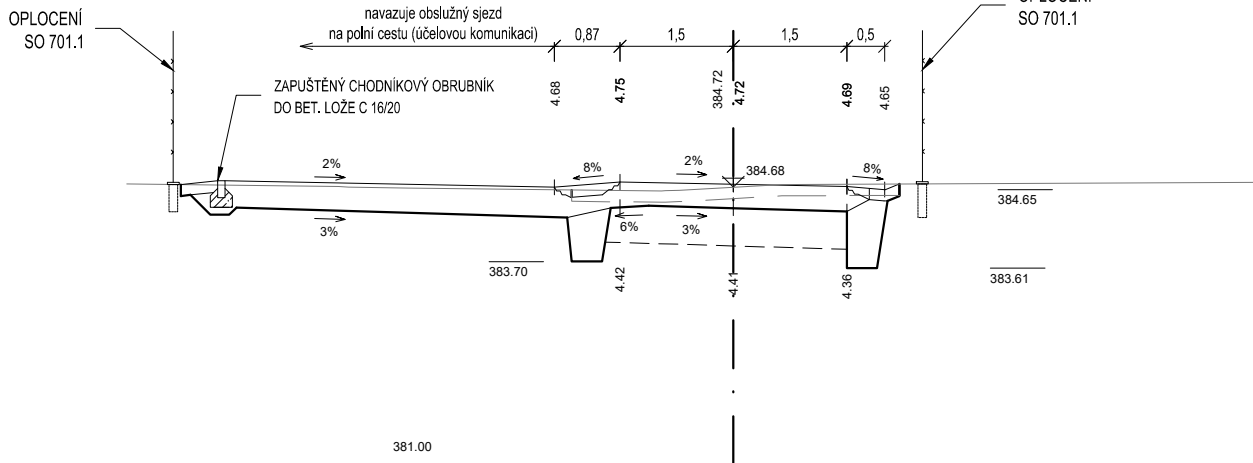
Č. přílohy:

Paré:

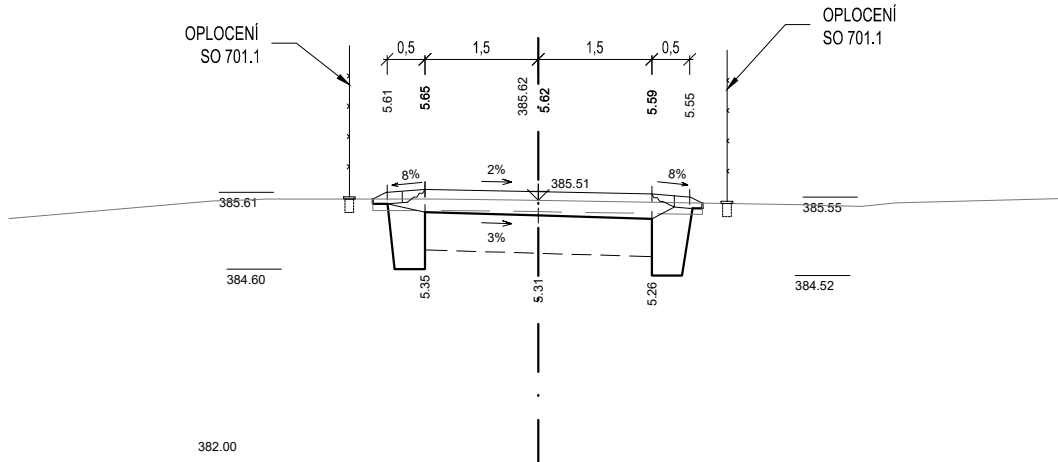
C.2.5

12000 Praha 2, Sokolská 32
tel: 296 337 111
fax: 296 337 100
satra@satra.cz

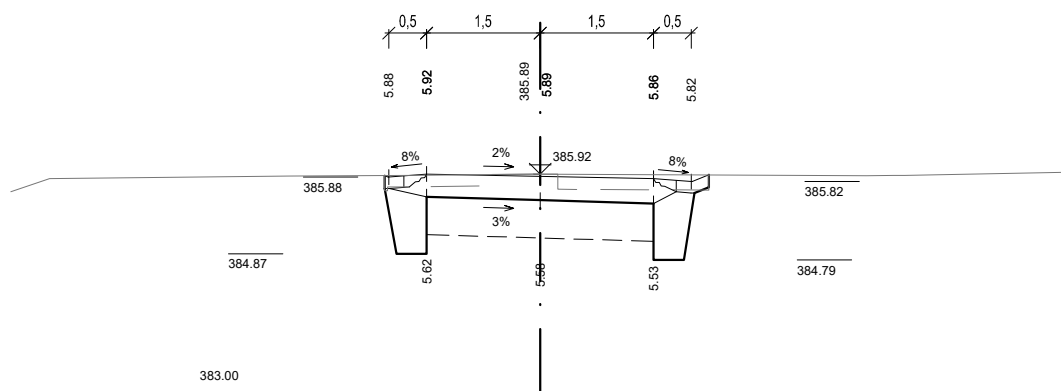
0.020000



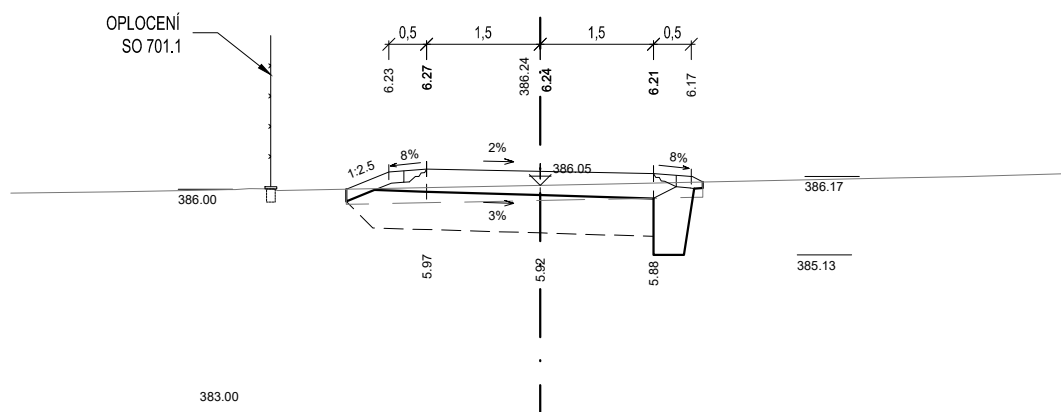
0.040000



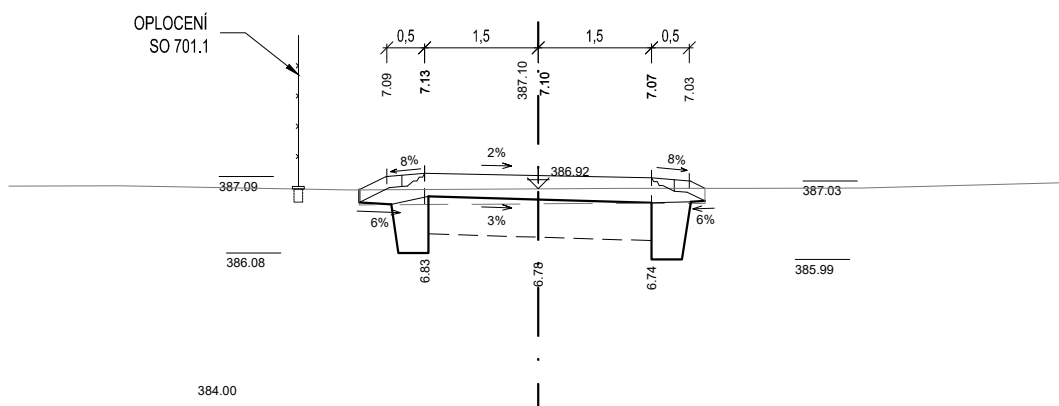
SO 101
0.060000



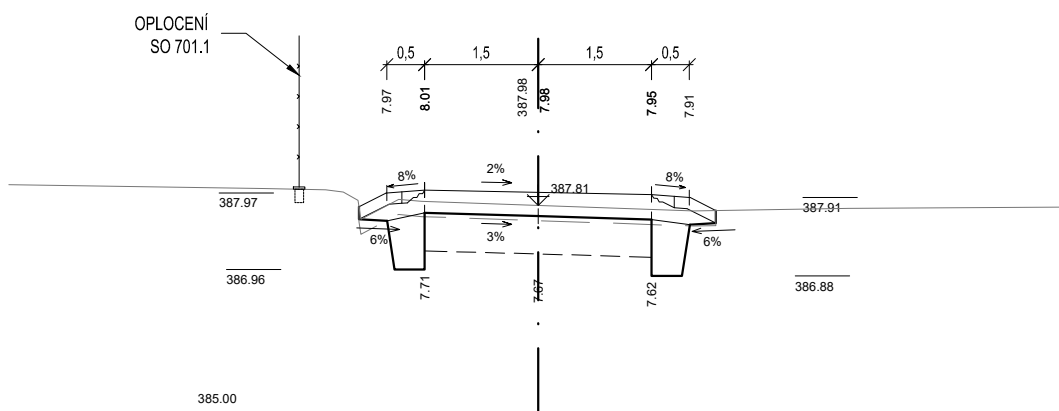
SO 101
0.080000



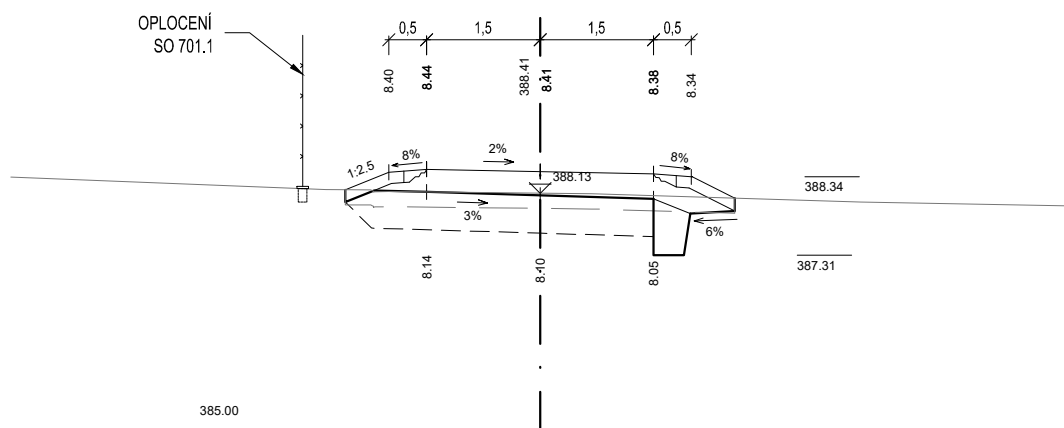
SO 101
0.100000



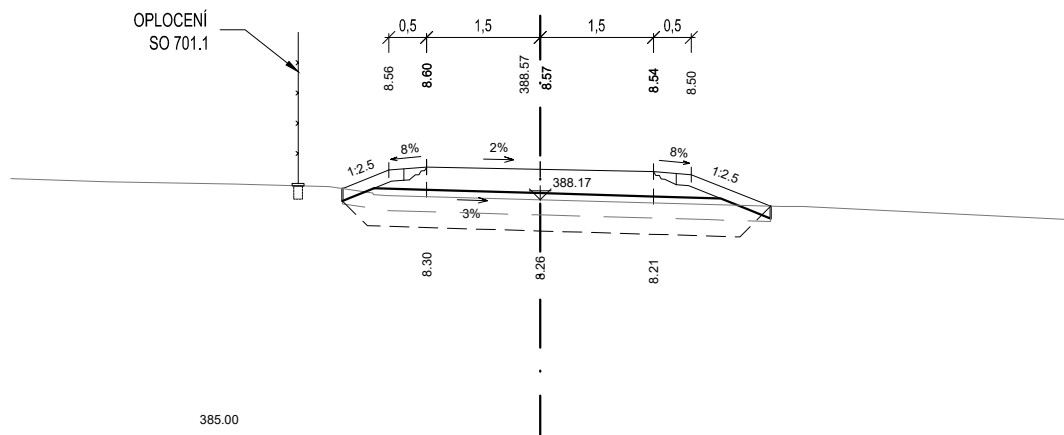
SO 101
0.120000



SO 101
0.140000

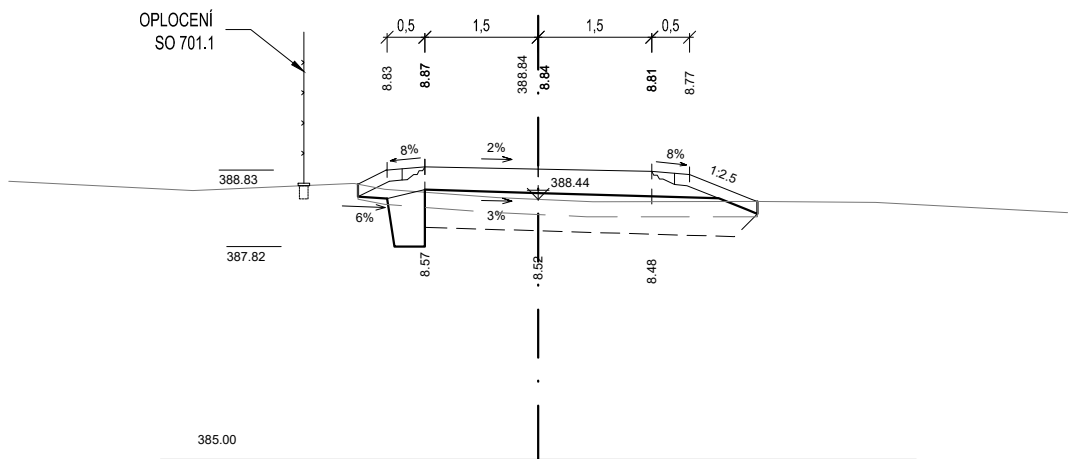


SO 101
0.160000



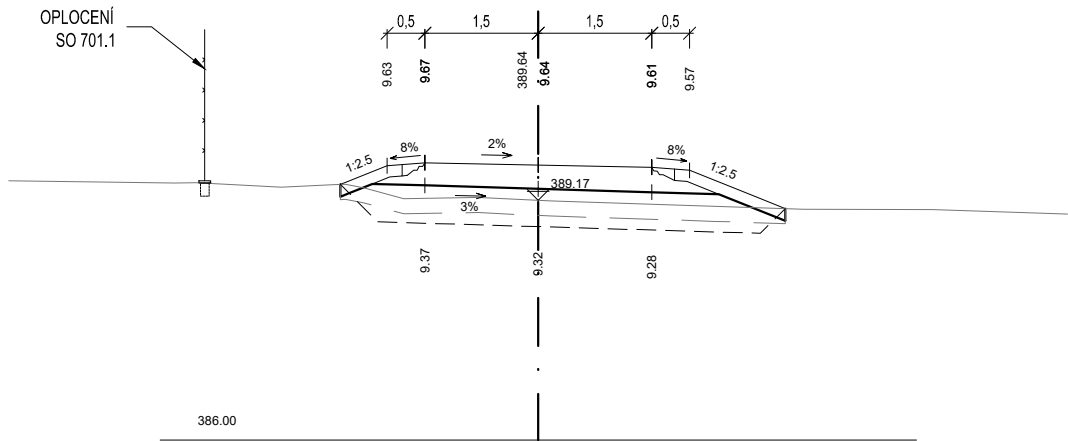
SO 101

0.180000

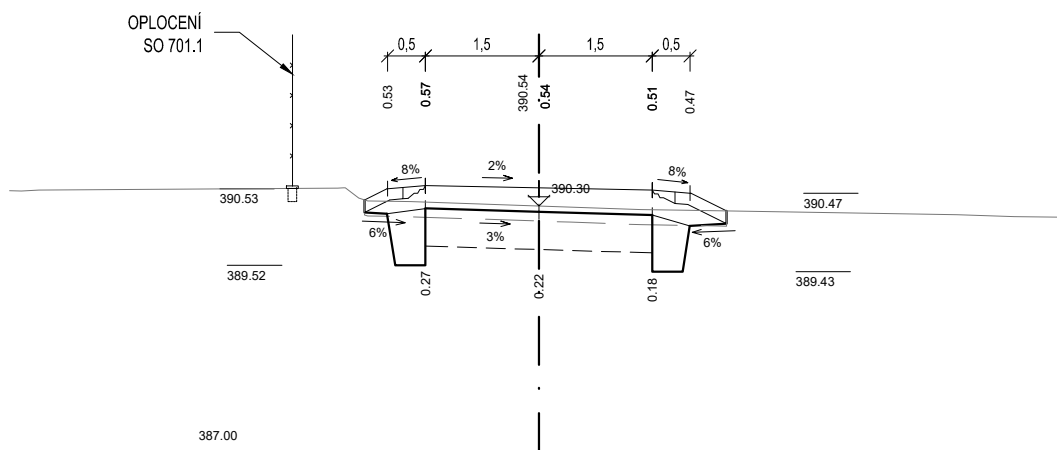


SO 101

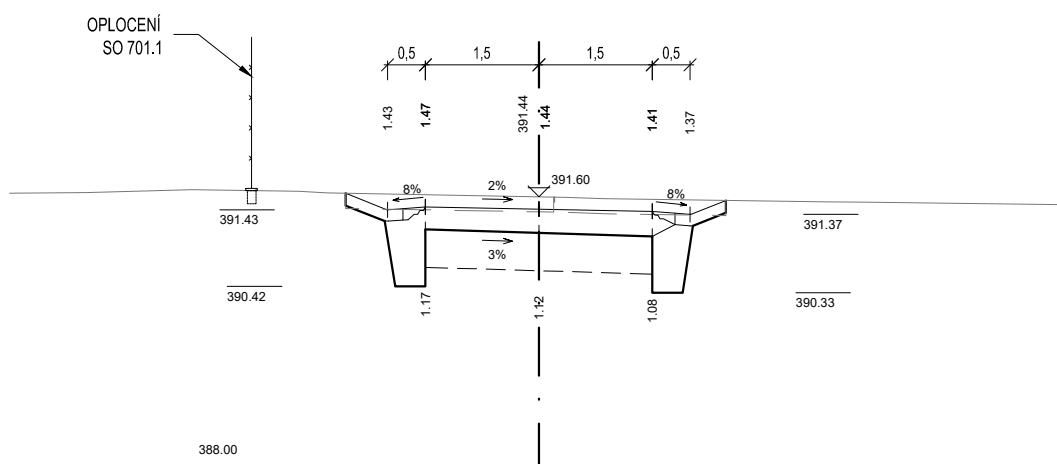
0.200000



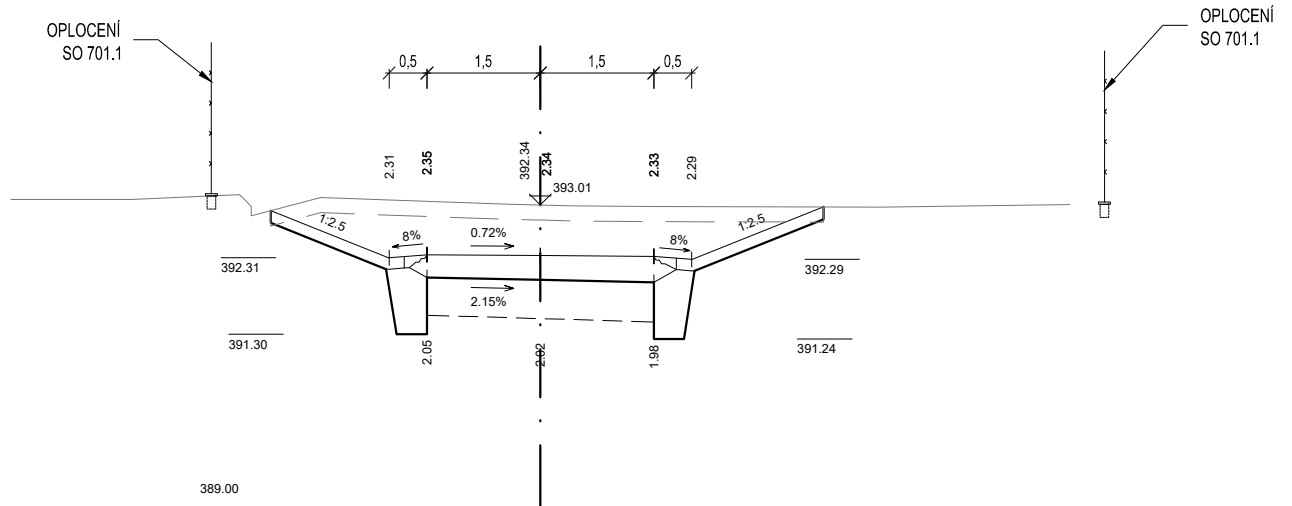
SO 101
0.220000



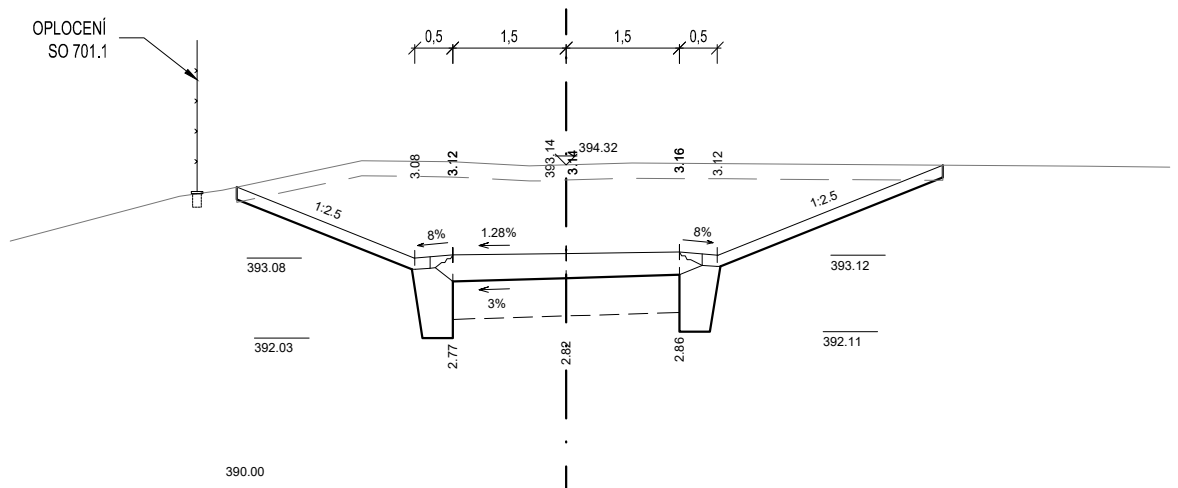
SO 101
0.240000



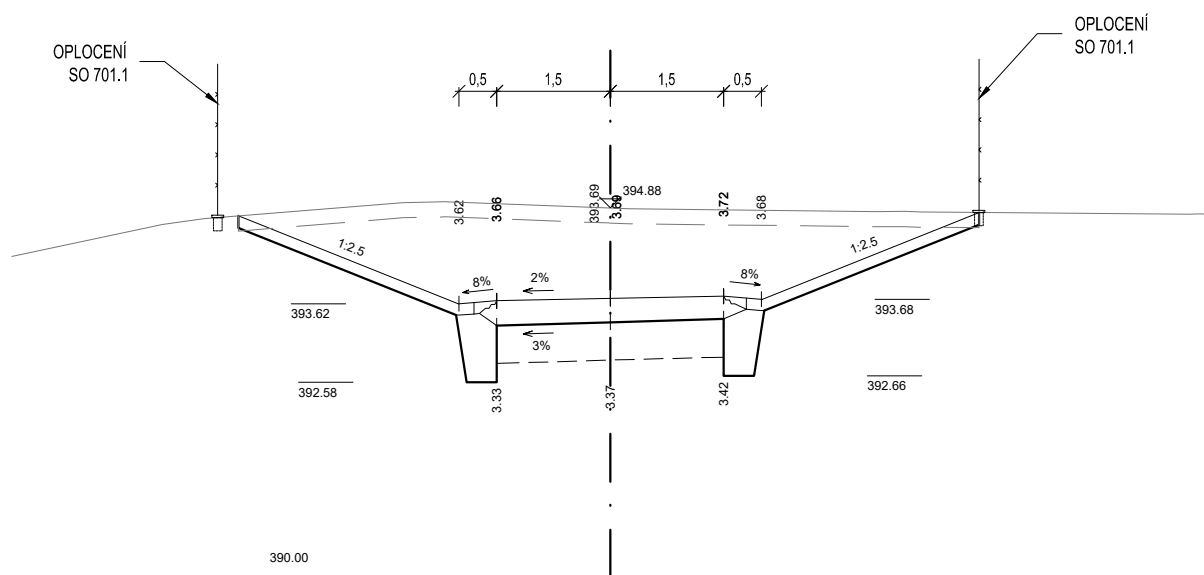
SO 101
0.260000



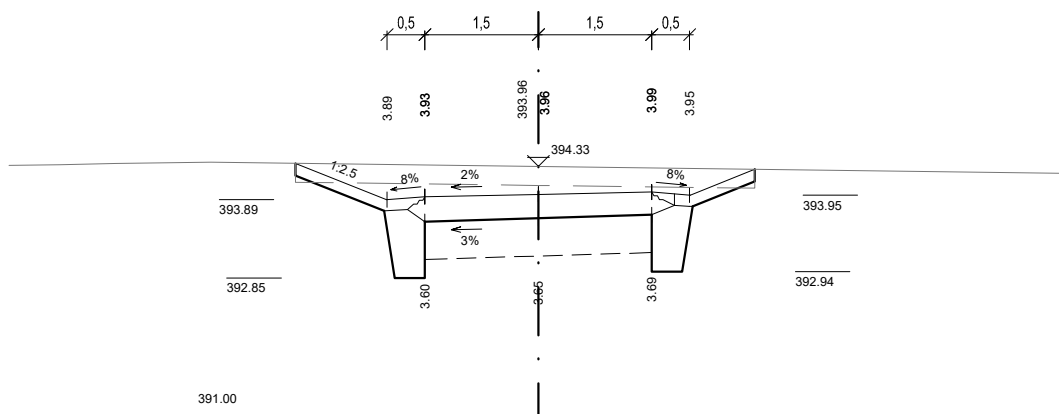
SO 101
0.280000



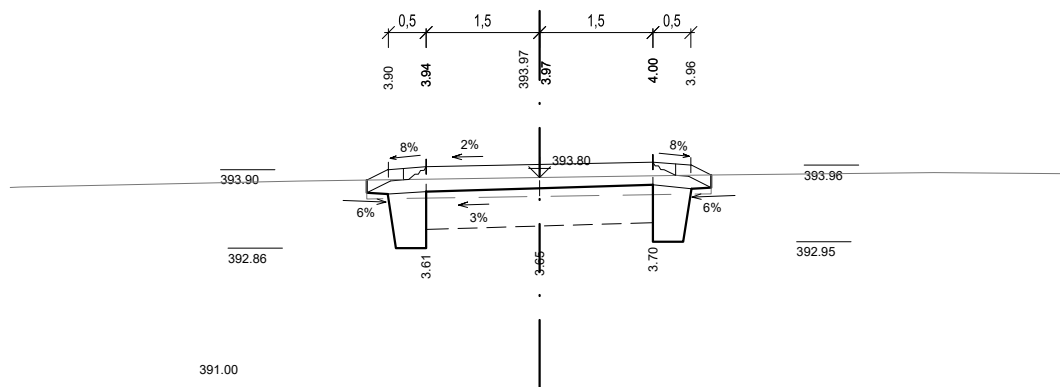
SO 101
0.300000



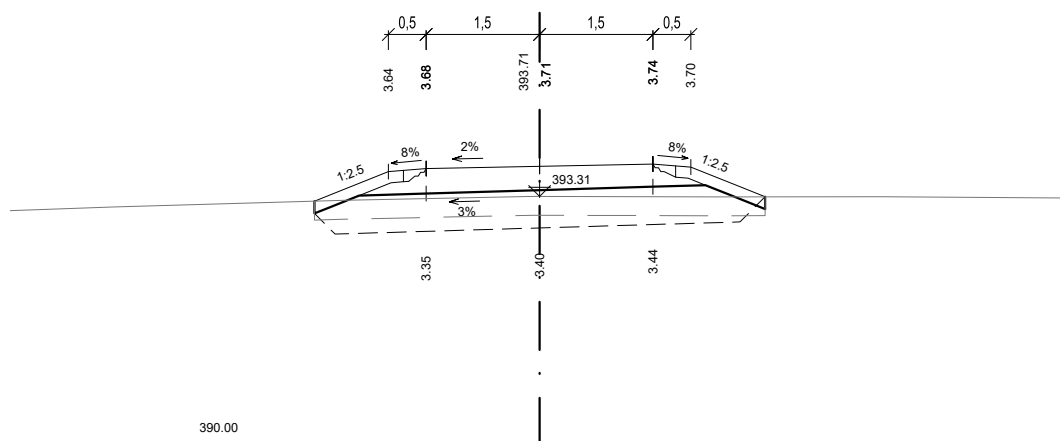
SO 101
0.320000



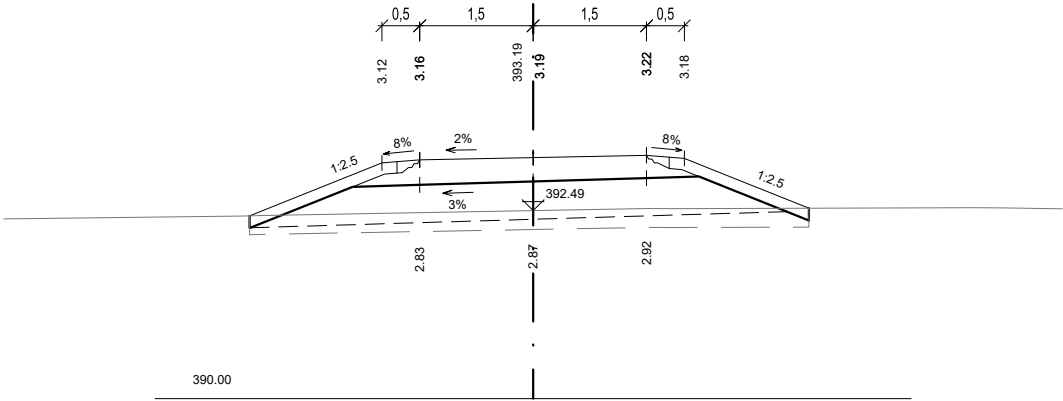
SO 101
0.340000



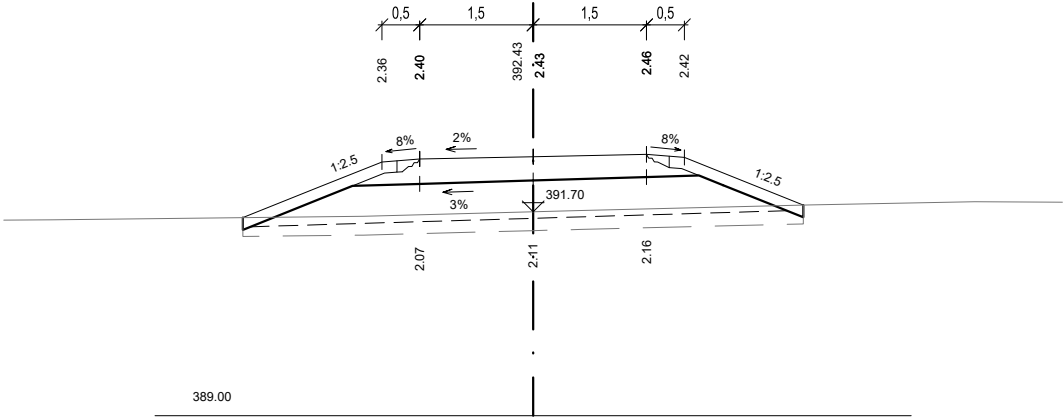
SO 101
0.360000



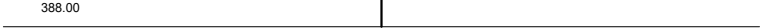
SO 101
0.380000



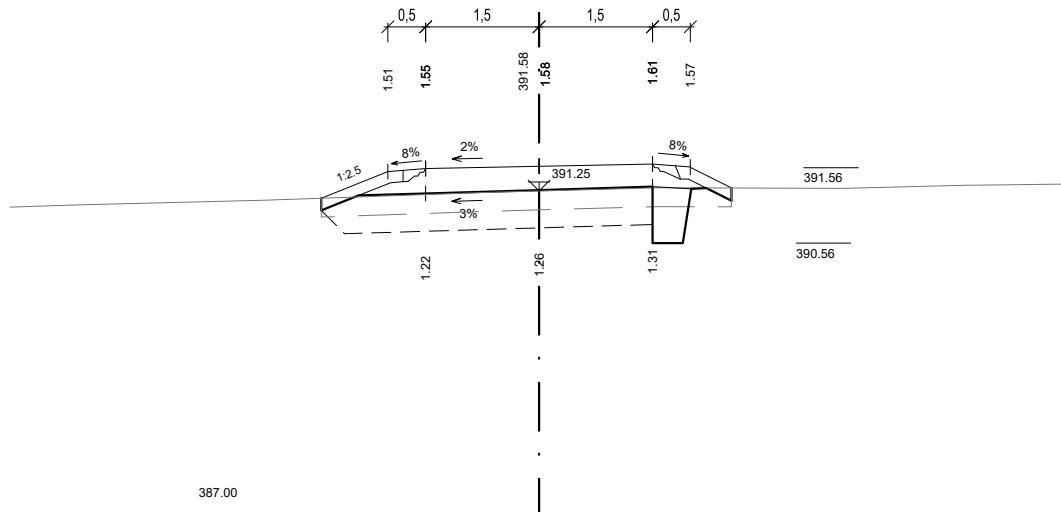
SO 101
0.400000



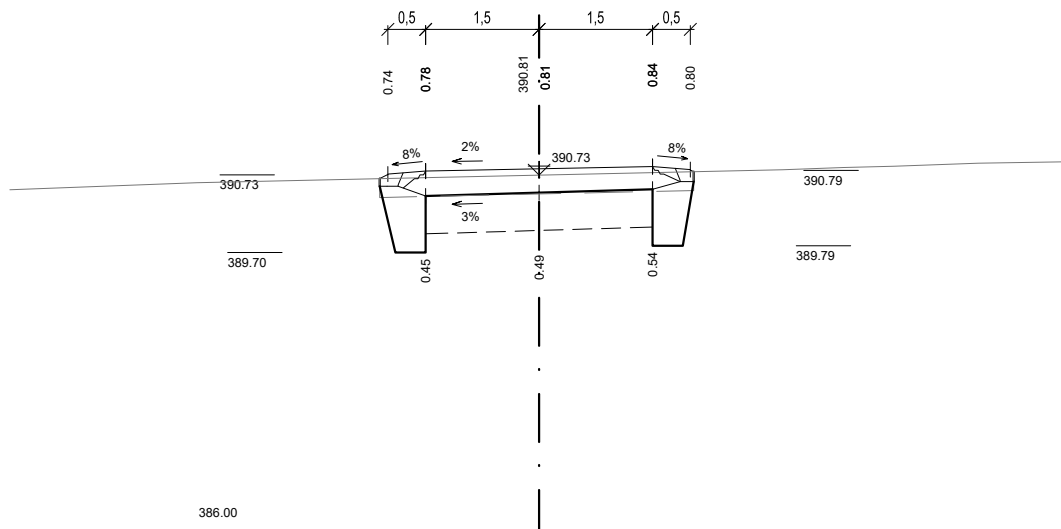
0.420000



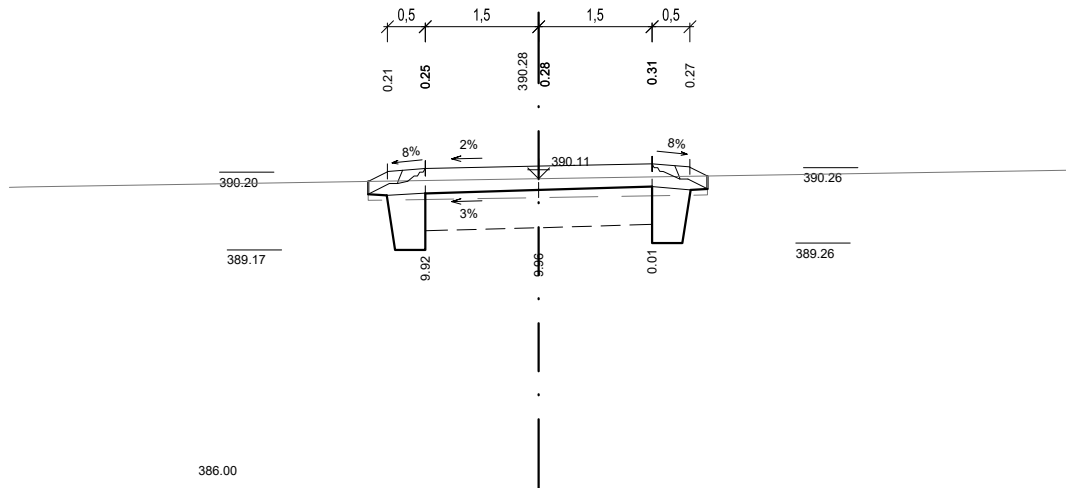
SO 103
0.000000



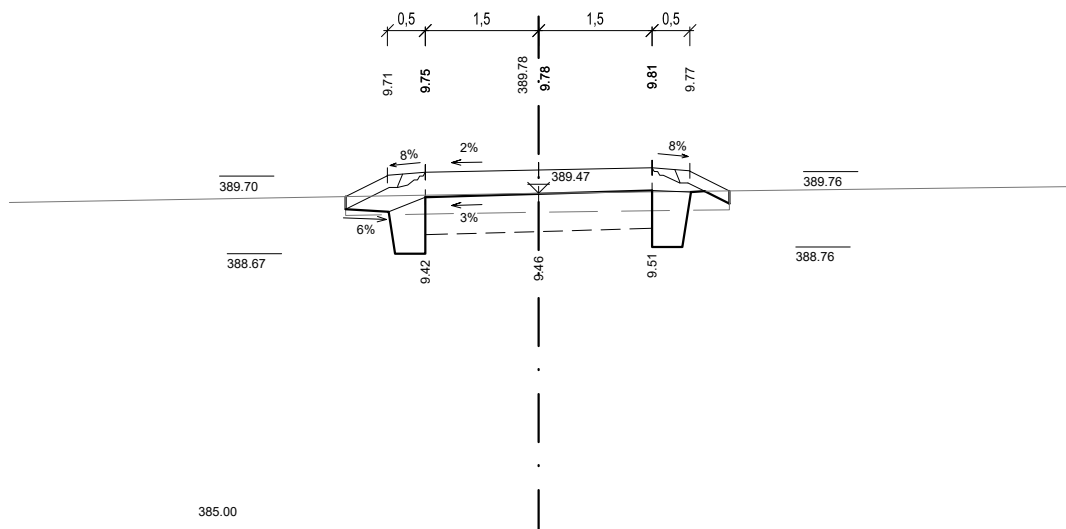
SO 103
0.020000



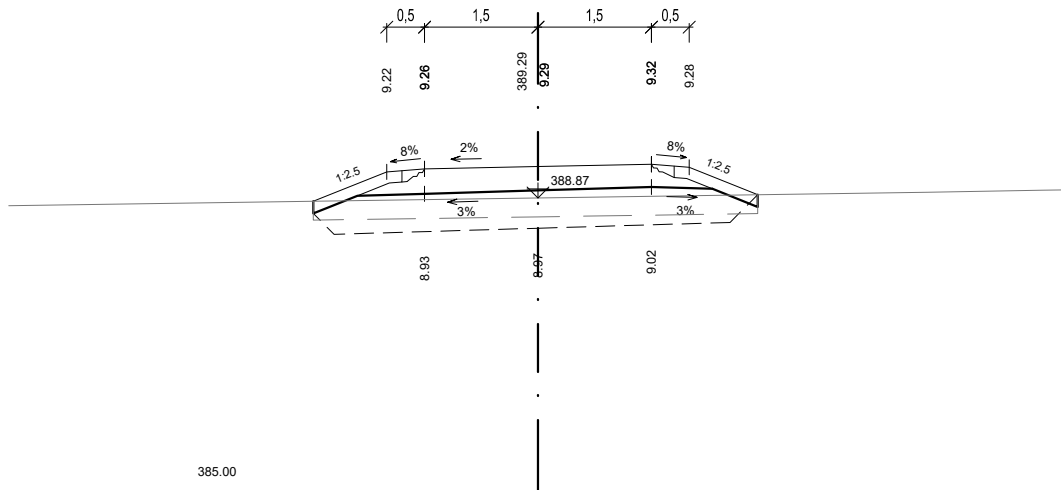
SO 103
0.040000



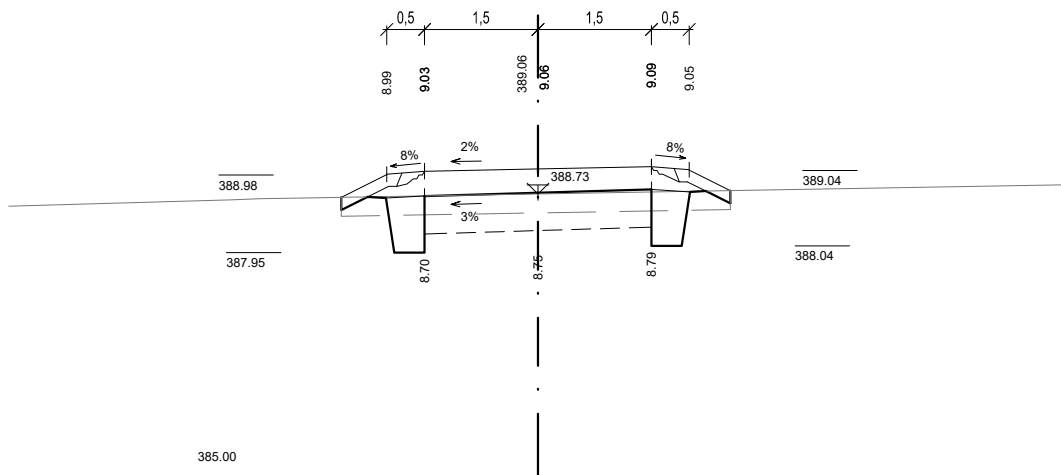
SO 103
0.060000



SO 103
0.080000

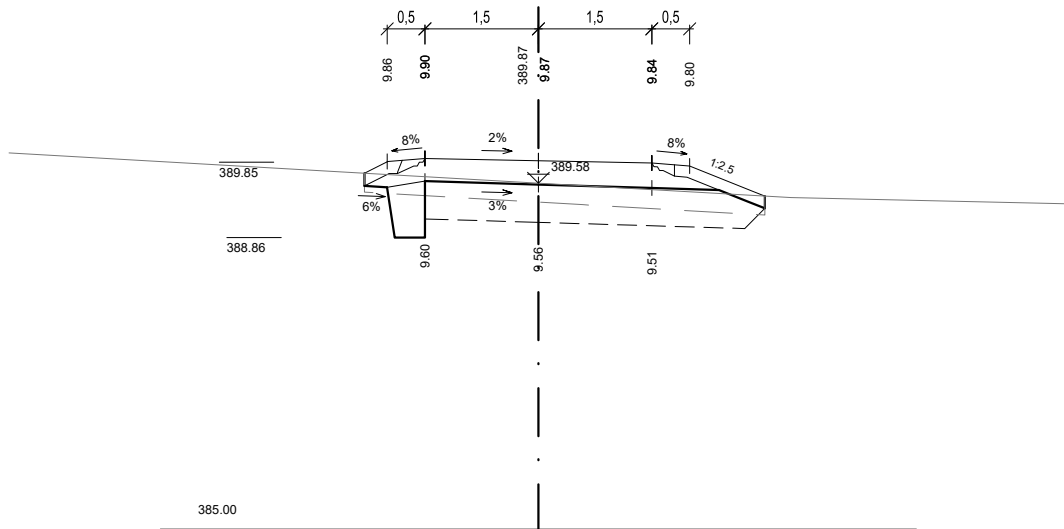


SO 103
0.100000

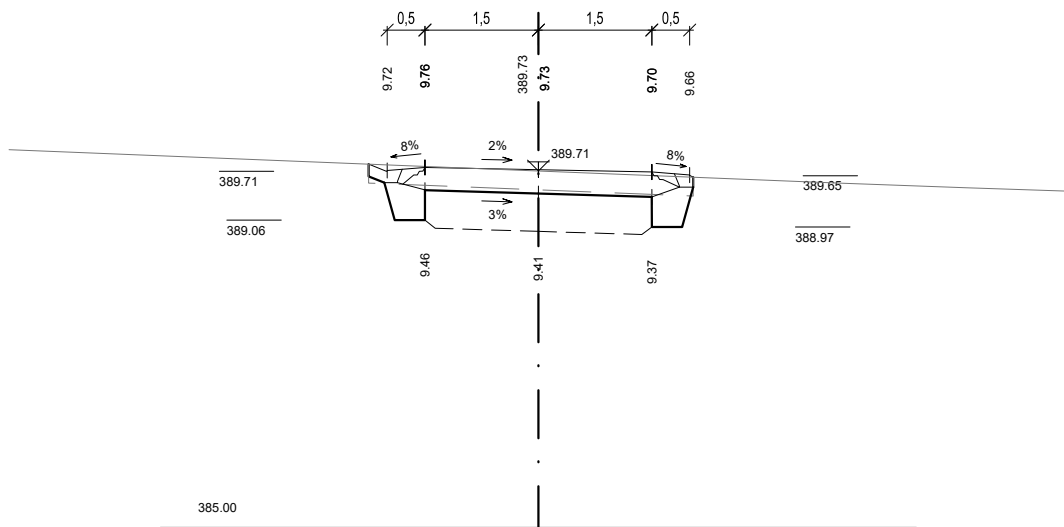


[illegible]

SO 103
0.160000



SO 103
0.180000



Technical drawing of a road cross-section. The drawing shows a central roadway with a 3% longitudinal slope (indicated by a horizontal line with an arrow pointing right). The shoulders are sloped at 8% (indicated by arrows pointing outwards from the centerline). The drawing includes several elevation markers: 389.50, 388.86, 389.47, 388.77, and 385.00. Horizontal dimensions are given as 0.5, 1.5, 1.5, and 0.5. The drawing is a technical sketch of a road cross-section, likely for a design or construction project.